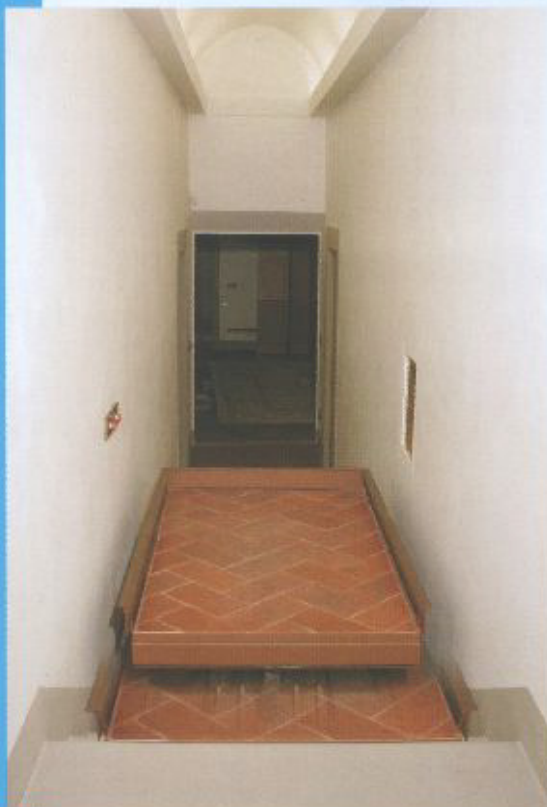




TRANSFER LIFTS



TRANSFER LIFTS SERIES Z-SLIM



The Z-SLIM transfer lifts are systems for eliminating architectural barriers helpful in overcoming small differences in height also with the possibility of taking up any horizontal offsets; the typical application is the one for overcoming brief flights of steps.

The Z-SLIM transfer lifts comprise a fixed pantograph base which takes care of the lifting and a sliding platform which takes care of the transferring. The transfer lift is fitted with motorised perimetral protections which rise before lifting begins, front crush prevention which stops the forward motion of the sliding platform in the event of interference with foreign bodies and bottom anti-crushing protection that stops the platform in the event of interference with foreign bodies during downward travel. The sliding platform can be provided in non-slip version or in a version that can be faced (by the customer). The facing can have a total maximum thickness of 30mm.

The platform can be fitted with an on-board pushbutton strip to allow autonomous use by the disabled person.

If the upward travel exceeds 500mm, the machine shall be fitted with a protection bar on the downward side, in this case, the pushbutton strip on board is a standard feature.

When at rest, the version without pushbutton strips on board is practically invisible from view, thus also solving environmental impact problems in historical buildings.

Specifications:

- Capacity 300Kg.
- Maximum elevation 500mm (780mm for model Z-SLIM SUPER)
- Maximum transfer 900mm
- Rear and side protective edge with motorised lifting
- Anti-crushing protection on the upward side to automatically stop forward travel in the event of interference with foreign bodies
- Bottom safety perimeter to automatically stop downward travel in the event of interference with foreign bodies
- Protection bar on downward side (only SLIM SUPER models)
- Platform surface coated with non-slip material; on request the platform can be supplied prepared for masonry facing (marble, tiles, etc.), the maximum total thickness of the facing plus glue is 30mm.
- Pantographs made of steel section bars, spaced to avoid the risk of shearing during movements
- Two bars on the pantographs for mechanically locking the platform for performing maintenance operations under safety conditions
- Safety valves for automatically blocking the downward travel in the event of breakage of the fluid power pipes
- External electrohydraulic control unit with maximum pressure valve to avoid overloads
- Electric system built to CEI regulations
- Supply voltage 220/380V 50Hz 0.75KW three-phase or 220V monophasic
- Landing pushbutton panels, in low voltage (24 V)
- Pushbutton panel on machine (when present), in low voltage (24 V)
- Platform useful size 900x1525
- Pit size 940x1570 depth ~~100mm~~ the depth increases to ~~100mm~~ in the version to be faced.
100mm. 130mm.

The systems have been designed and manufactured in accordance with the provisions of the following:

- LAW no. 13 of 09/01/89
- MINISTRY'S DECREE no. 236 of 14/06/89
- UNI STD. 9801
- MACHINE DIRECTIVE D.P.R. 24 July 1996, no. 459 - 98/37/EEC - 98/79/EEC (89/392/EEC - 91/368/EEC - 93/44/EEC - 93/68/EEC)
- ELECTROMAGNETIC COMPATIBILITY DIRECTIVE D.L. 12 November 1996, no. 615 - 89/336/EEC - 92/31/EEC - 93/68/EEC - 93/97/EEC
- LOW VOLTAGE DIRECTIVE Law no. 791 del 77, D. L. no. 626 of 96 - 73/23/EEC - 93/68/EEC

* The sizes given may vary depending on the shape of the stairs.

Further information

- This is the ideal system when there are environmental impact problems.
- Important note: use is limited to overcoming no more than 3 steps (900 mm of transfer)



FABOC DUE s.r.l.

Via Toscana, 148
50052 CERTALDO (FI) - Italy
Tel. 0571 662474 - Fax 0571 666865
E-mail: info@fabocdue.it - www.fabocdue.it

Local Agent

• We reserve the right to implement modification without notice.